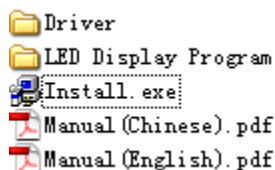


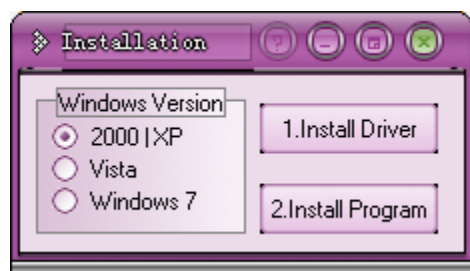
# The Instruction for LED Display (12 lines)

Version2.0

## I. Open the disk:



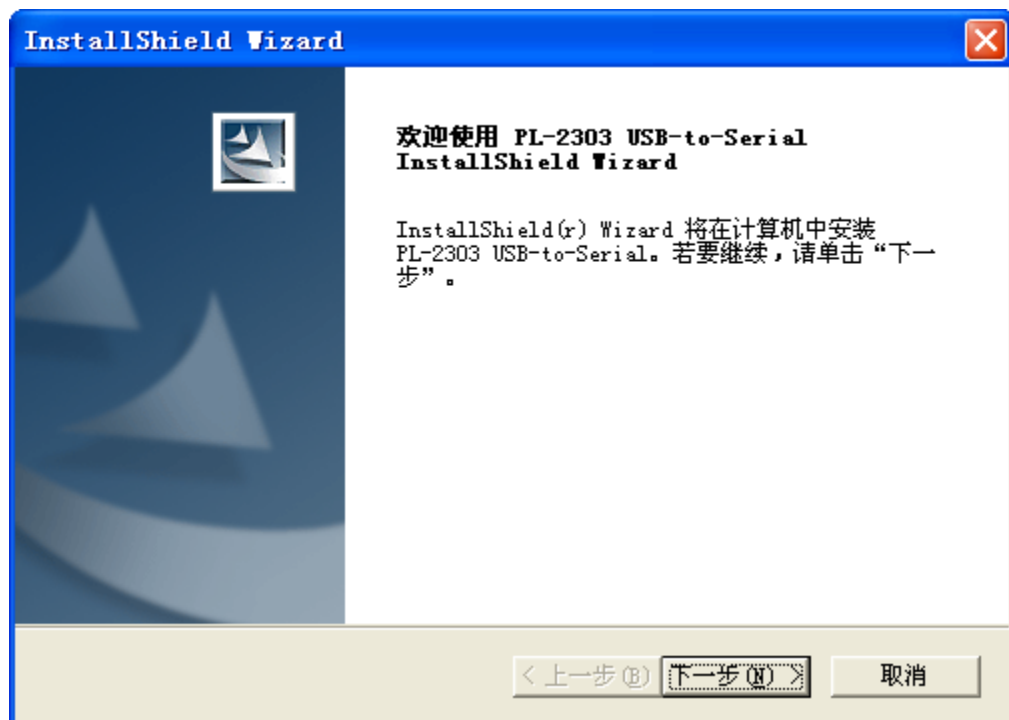
Run the "Install.exe", then turn out the following window:



Please do not change the Operating System which the program choose.

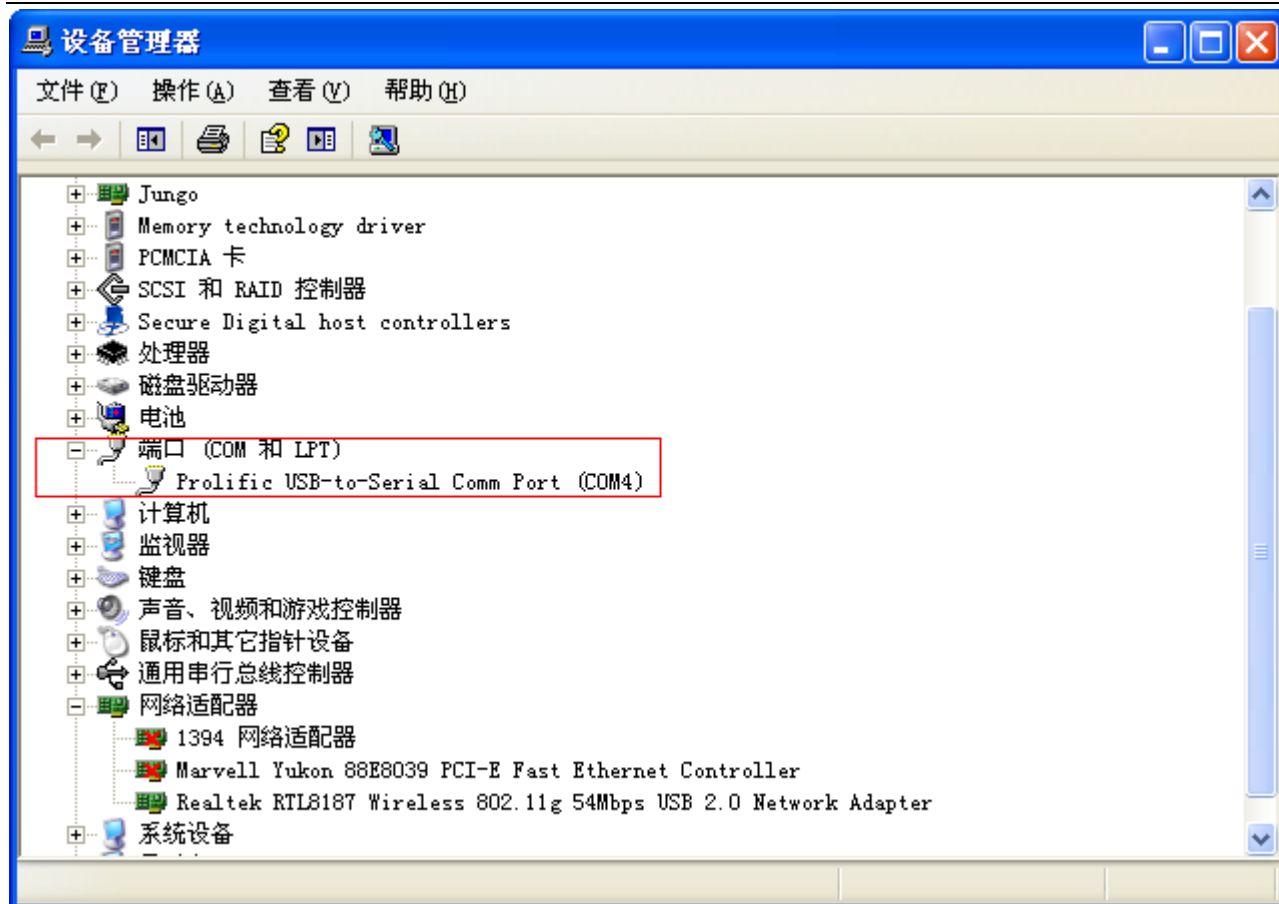
## II: Install the driver

Click at "1. Install Driver"(Note: Corresponding driver will automatically install to different Operating System, Take 2000 XP a example)

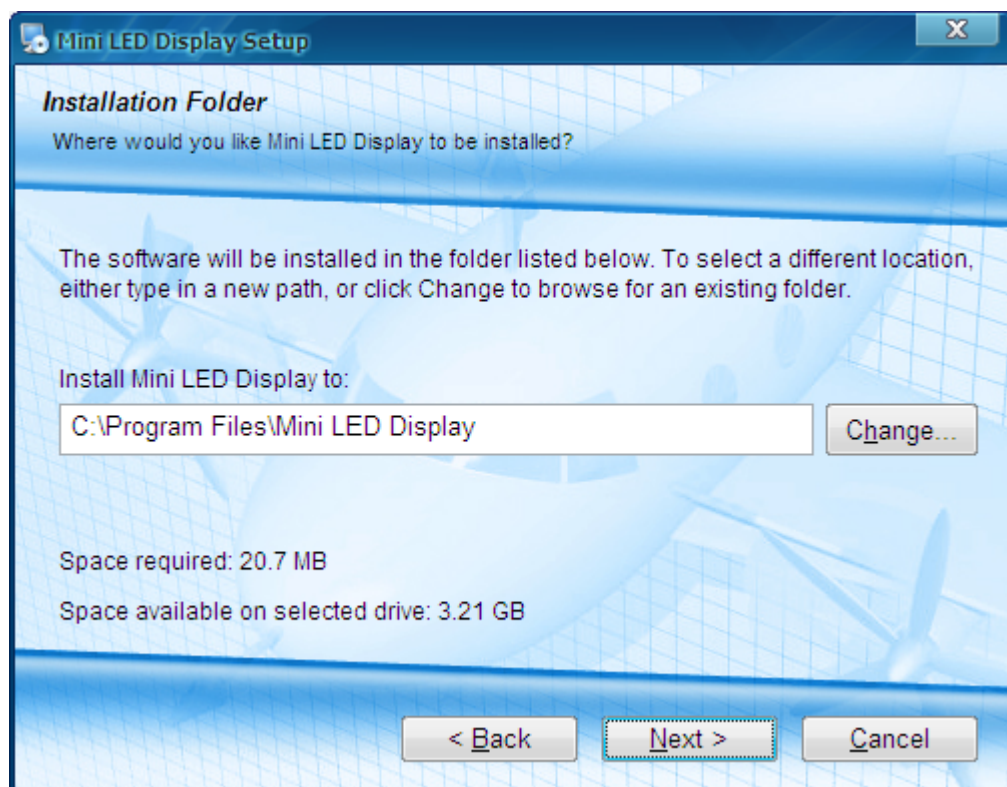


Click at :下一步(N), A few seconds later, install succesfully.

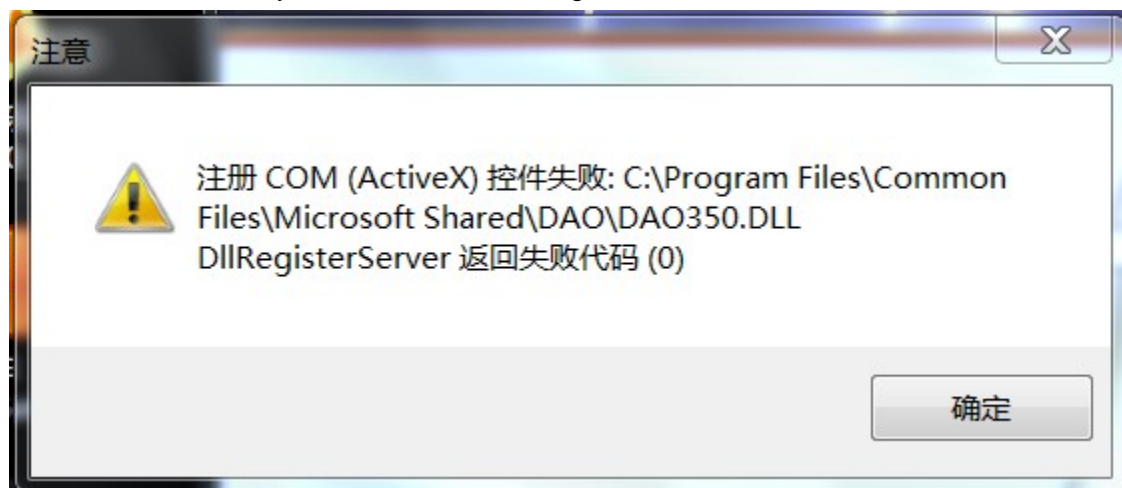
Then put on the USB cable,, in "device manager" you can see the following feature---Prolific USB-to-Serial Comm Port(com,,)



### III: Install the Program

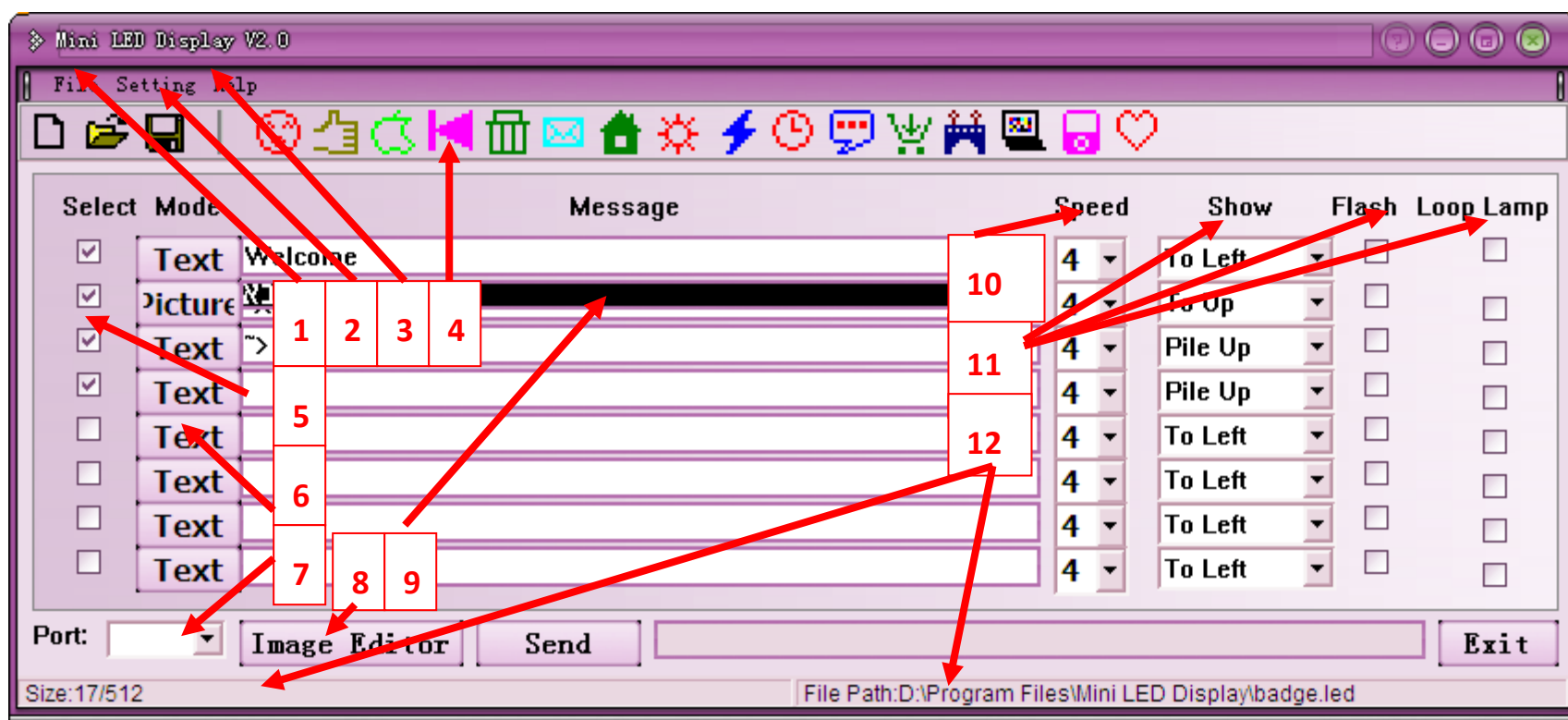


Some OS version maybe show box as blow, ignore it, click OK



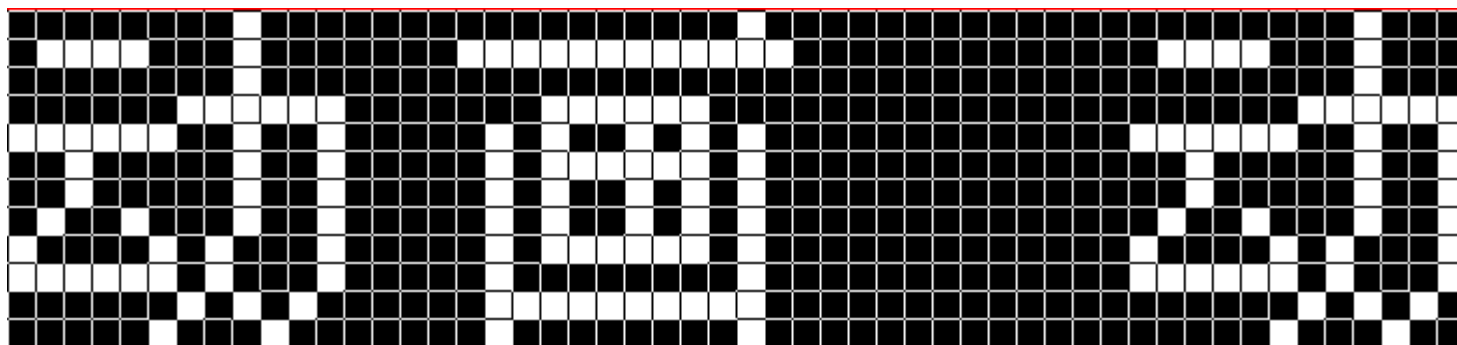


Click “Next” to finish it, Meanwhile there is a shortcut of Mini LED Display on the desktop. Double click then you can use the program.



1. File: , Drop-down menu includes “Open”, “Save”, “Save as” , It can open a file or create a message to \*.led.
2. Setting: Can choose different language and skin.(Note: Default language is the same with the Operating System)
3. Help: Open this instruction.
4. Tools: From left to right are symbols for “New”, “Open”, “Save”, and 16 symbols can be directly input to message.
5. Selection: You can choose the message which you want to display on the screen.
6. Mode: Clicking at it can change “text” or “Picture”, Text and toolbar picture can insert into the textbox. Any black & white picture can insert into the picture box
7. Port: Default value by the Operating System. If not, click the com to choose.
8. Open the “Image Editor” to edit the picture in black or white. For the detail, please take the instruction of “Image Editor” for reference.
9. Can input words or picture
10. Speed: Level 1 to 8, default is level 4.
11. Display Mode: Up, Down, Left, Right, Freeze, Snow, Depart, Animation, Flash and looping lamp.

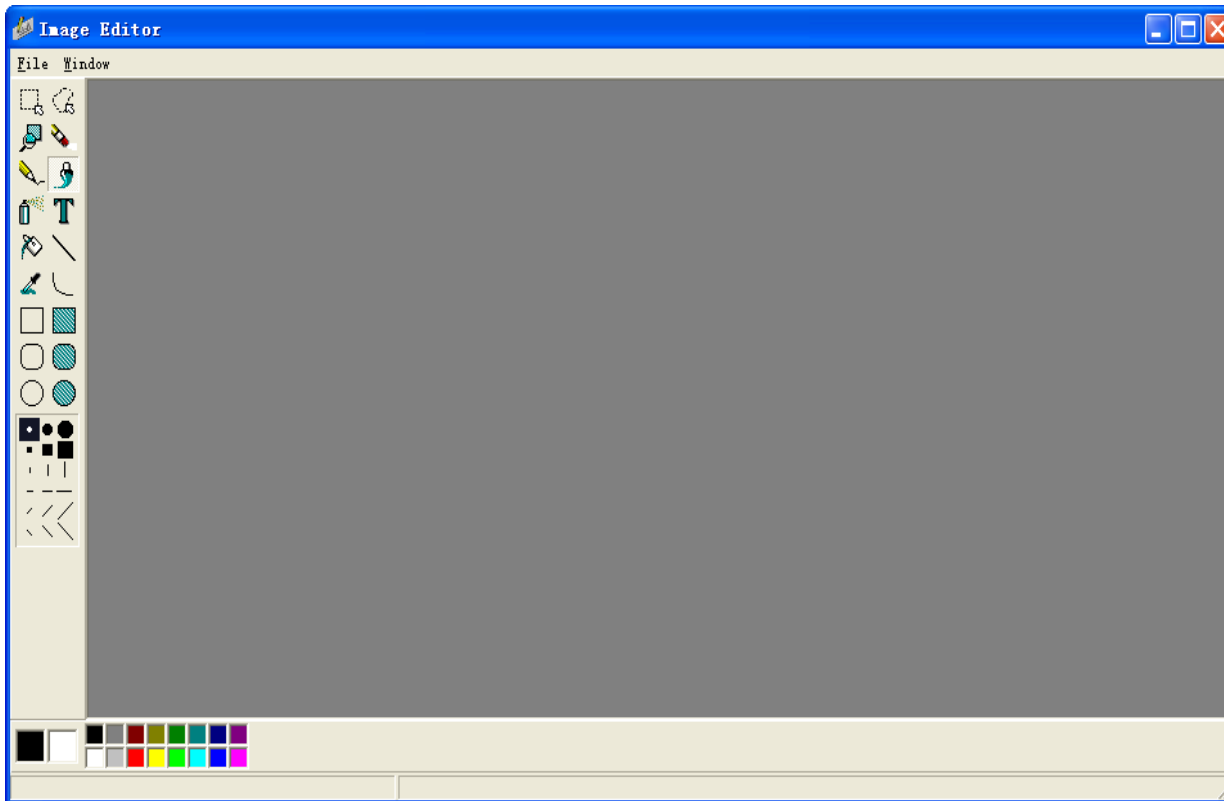
Remark, only the first message can display animation mode, the picture is 12\*40/1 frame, please refer the picture “Animation”



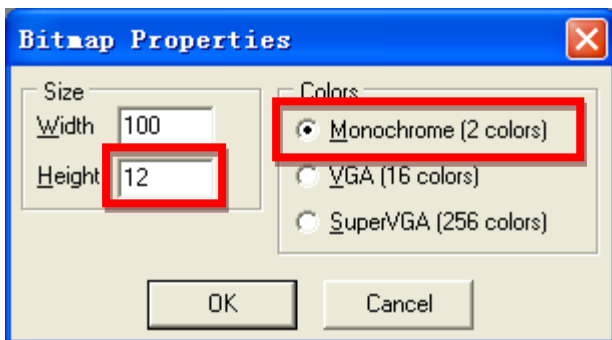
12. Status Bar: Left shows the sending capacity, Right shows the file path.

### III: The Instruction of Image Editor

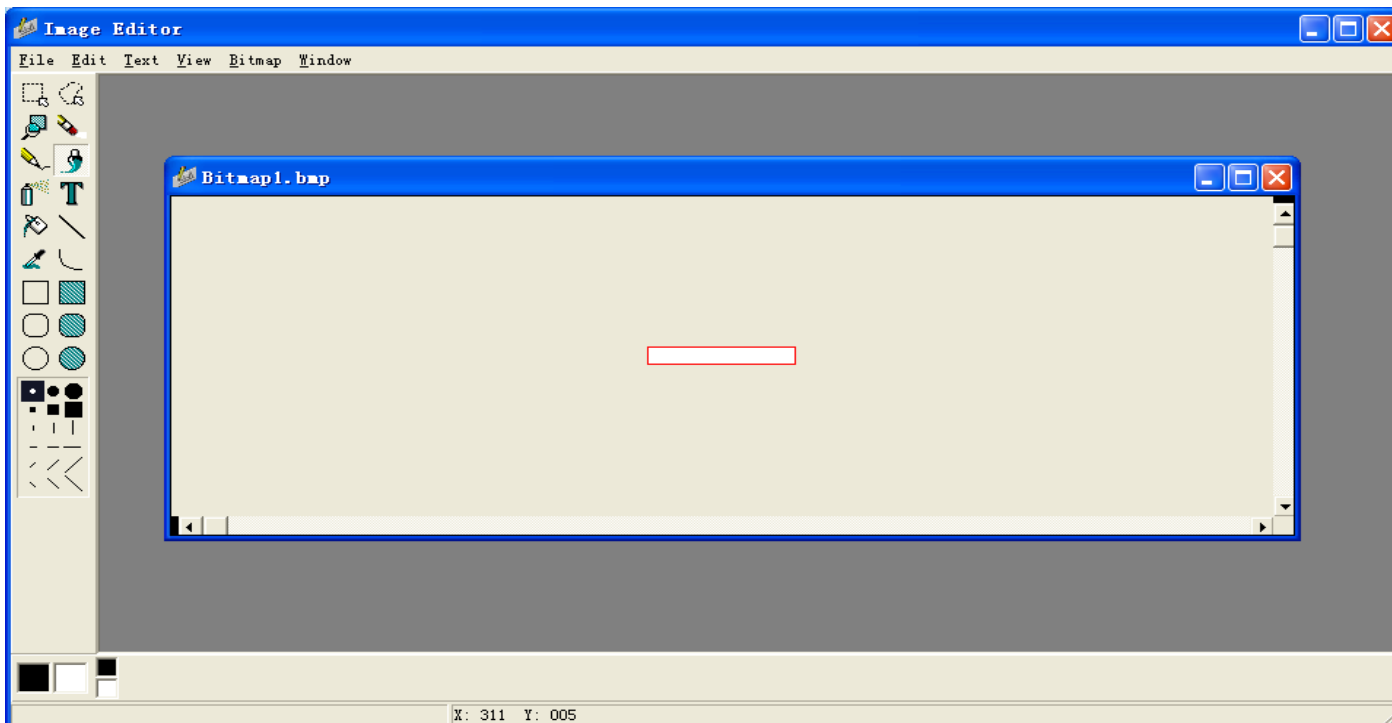
1. Click 8 “Edit Picture”, Run the Image Editor program.



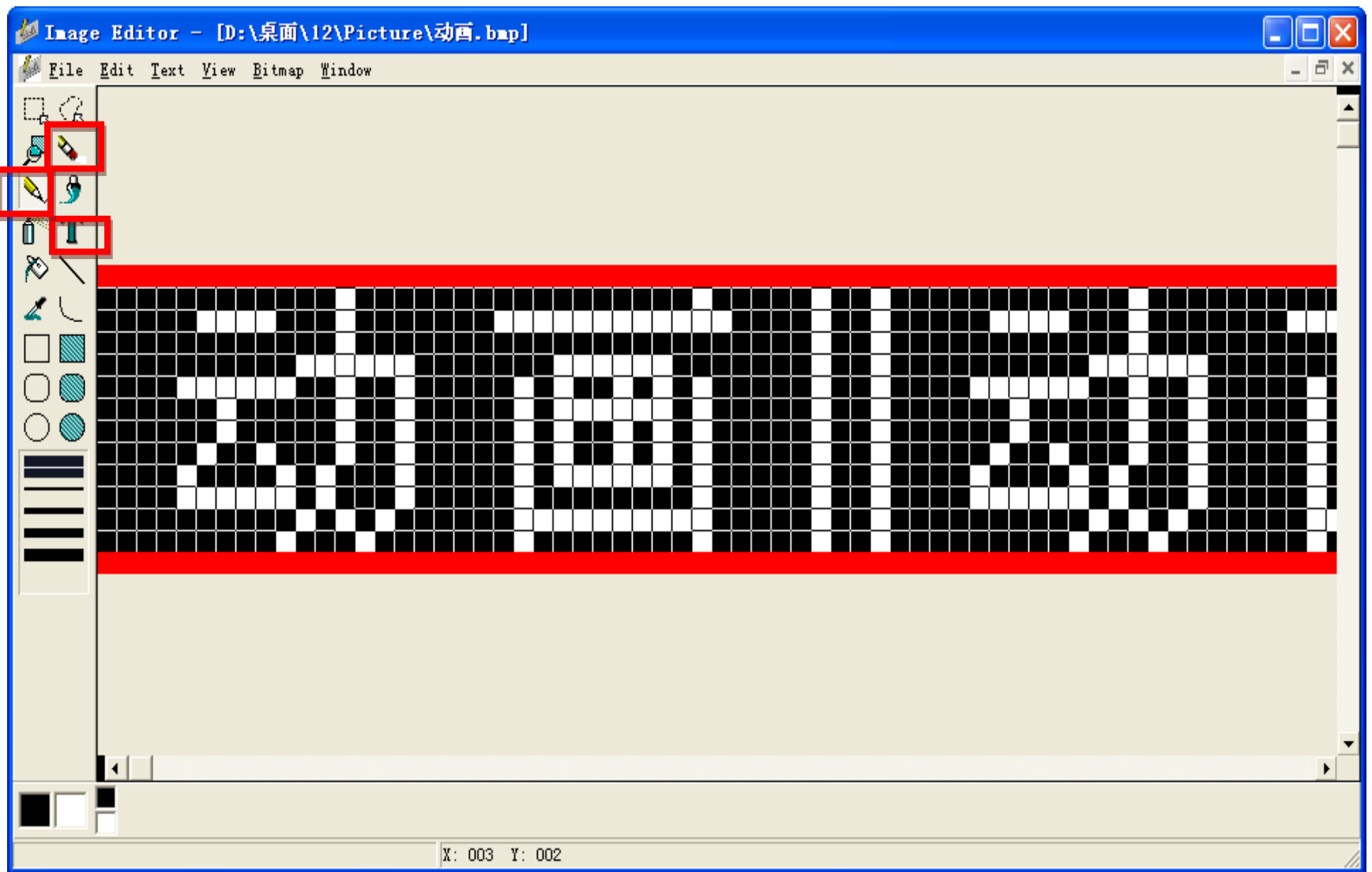
2. Open "File"→"New", Create a new picture.



Fill in as the above setting.



Then click View→Zoom In or Ctrl+I to large the area.



You can draw white or black picture using the red marked button, then save as \*.BMP,