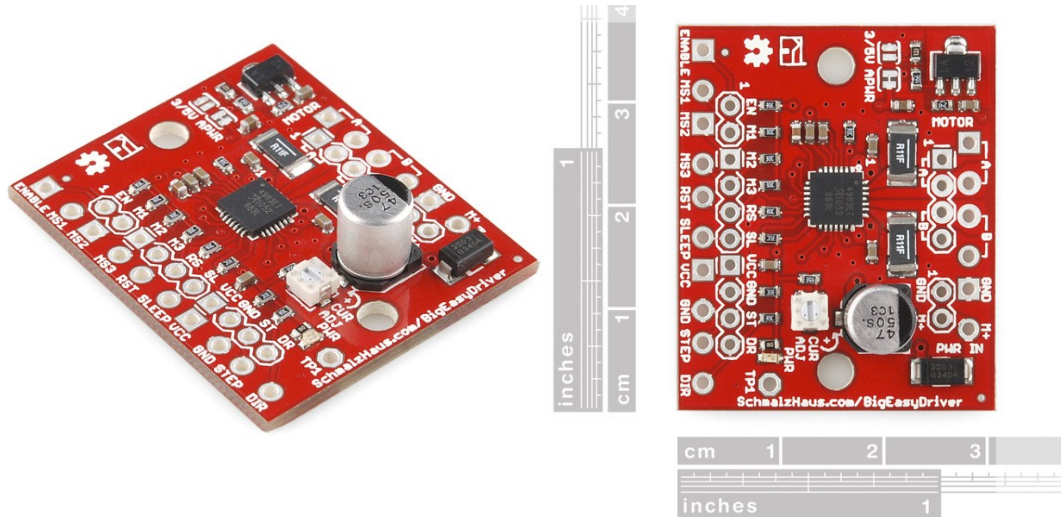


SparkFun

Big Easy Driver

sku: ROB-10735



Description: The Big Easy Driver, designed by [Brian Schmalz](#), is a stepper motor driver board for bi-polar stepper motors up to 2A/phase. It is based on the Allegro A4983 stepper driver chip. It's the next version of the popular Easy Driver board.

Each BigEasyDriver can drive up to about 2A per phase of a bi-polar stepper motor. It is a chopper microstepping driver which defaults to 16 step microstepping mode. It can take a maximum motor drive voltage of around 35V, and includes on-board 5V/3.3V regulation, so only one supply is necessary. Although this board should be able to run most systems without active cooling, a heatsink is recommended for loads approaching 2A/phase. You will find a link to the recommended heatsink below.

Note: The arrow indicators on the current adjustment potentiometer is backwards. Keep this in mind if you're adjusting the current limits.

Features:

- Bi-polar Microstepping Driver
- 2A/Phase Max
- Max Motor Drive Voltage: 35V
- On-board 5V/3.3V Regulation

Documents:

- [Schematic](#)
- [Eagle Files](#)
- [Datasheet](#) (A4983)
- [Design Site](#)